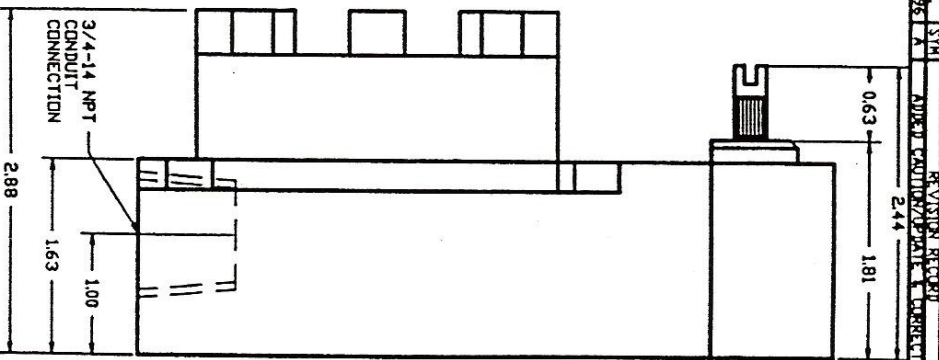


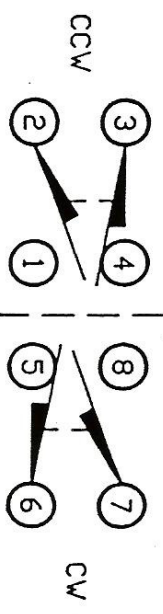
5/16-18 UNC
TAPPED FROM
REAR ONLY
0.88 MIN DEPTH.



DATE	SYN	REV	DESCRIPTION
7/15/95	A		ADDED CAUTIONS/OPERATING CONNECTION

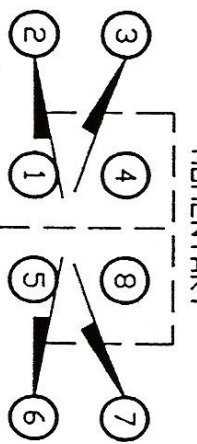
GENERAL ELECTRIC SWITCH
EXPLOSION PROOF NEMA 7 AND 9
CL. I GR. B, C, DR D CL II GR. E, F, DR G
MAXI 250°F MIN. -40°F

LSXYMB4N-2C ONE SWITCH PER
KERRY ACTUATOR
CENTER NEUTRAL
(MOMENTARY)



SPDT DOUBLE BREAK
EACH DIRECTION
ELECTRICAL RATING B

LSXYAB4L-2C TWO SWITCHES PER
KERRY ACTUATOR
MOMENTARY



DPDT DOUBLE BREAK
ELECTRICAL RATING B

CAUTION:
TO PREVENT IGNITION OF HAZARDOUS
ATMOSPHERES, DISCONNECT SUPPLY
CIRCUIT BEFORE OPENING. KEEP ASSEMBLY
TIGHTLY CLOSED WHEN IN OPERATION.

CONTACT RATING 120 VAC MAKE = 30 A
(SWITCH PART NUMBER INCLUDES LEVER LSZ52C)

BREAK 3 A

THIS DRAWING OR PRINT IS
THE PROPERTY OF THE KERRY
COMPANY, INC AND IS LOANED
TO YOU SUBJECT TO RETURN
ON DEMAND. UNLESS OTHER-
WISE AGREED TO IN WRITING
BY THE KERRY COMPANY, INC.
THIS DRAWING AND ALL RIGHTS
HEREIN ARE RESERVED. ALL
AND MUST NOT BE COPIED OR
REPRODUCED IN ANY MANNER
WITHOUT THE WRITTEN CONSENT
FOR USE OR REPRODUCTION.

TOLERANCES (EXCEPT AS SHOWN)	THE KERRY CO., INC.		
DECIMAL	LSXYMB4N-2C	SCALE	DRAWN BY JSC
± .003	LSXYAB4L-2C	NONE	APPROVED BY
FRACTIONAL	TITLE G.E. MICRO SWITCH		
± .015	EXPLOSION PROOF		
ANGULAR	DATE 4/5/94	DRAWING NUMBER	REV. A
± 1/2°	LSXYMB4N-2C	LSXYAB4L-2C	