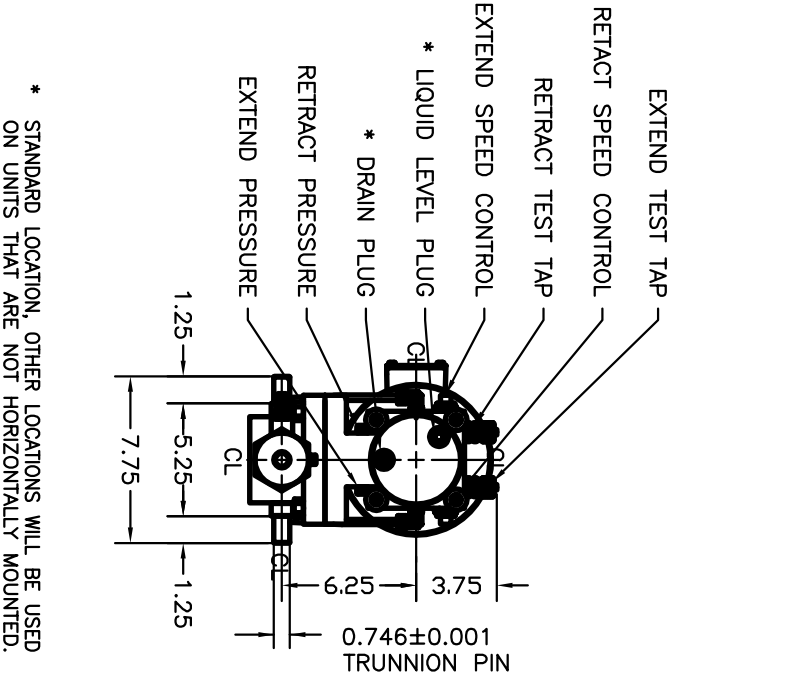
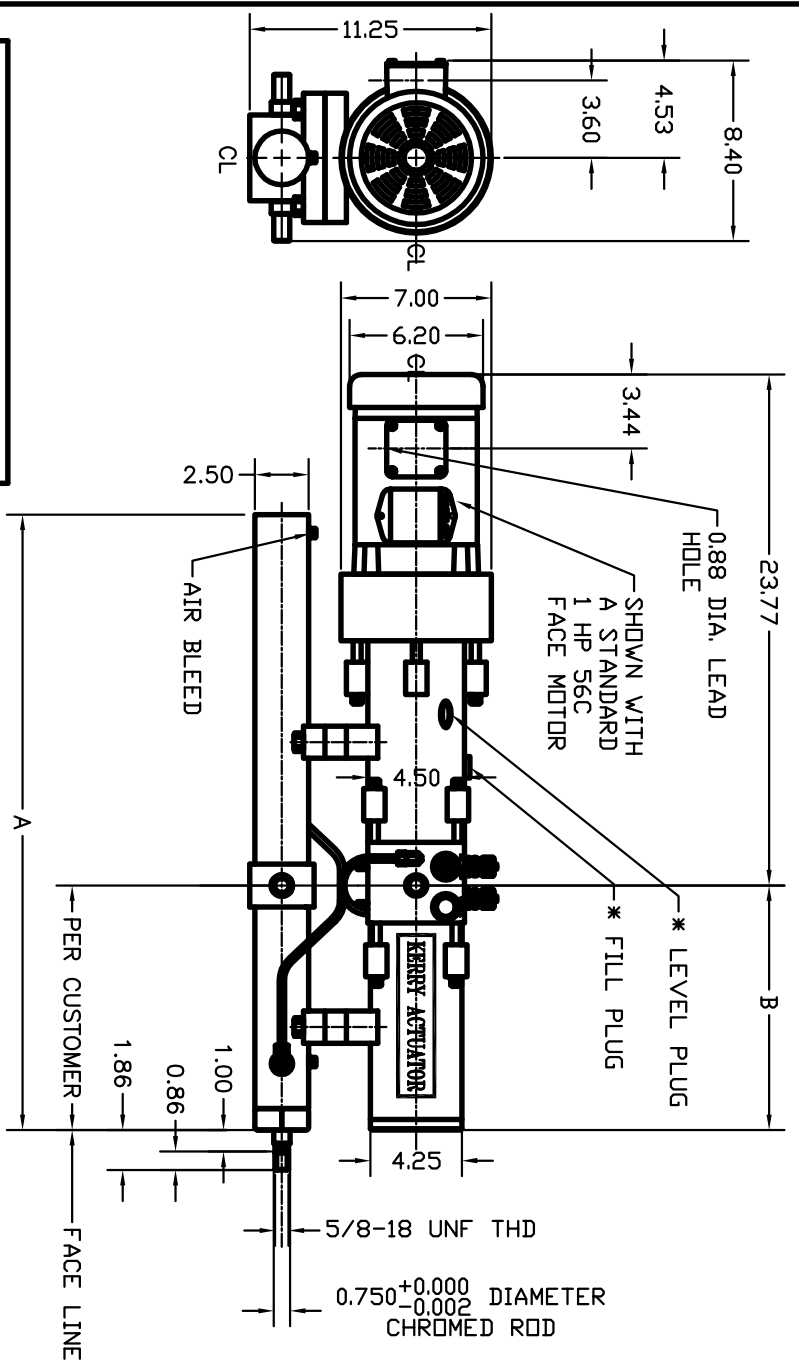


DIMENSIONS FOR STANDARD STROKES		
STROKE	A	B
6.00	12.25	11.00
12.00	18.25	12.00
18.00	25.25	17.00
20.00	28.75	17.00
24.00	33.75	18.00

NOTES:
THE ABOVE UNIT IS SHOWN WITH A STANDARD 1.500 BORE X 0.750 ROD CYLINDER SECTION. JB STYLE UNITS ARE AVAILABLE WITH LARGER BORE AND STROKE CYLINDER SECTIONS. CONTACT THE MANUFACTURER OR YOUR LOCAL SALES REPRESENTATIVE FOR FURTHER INFORMATION.



- NOTES:
1. OTHER SPECIAL MOUNTINGS AND ARRANGEMENTS ARE AVAILABLE.
 2. UNIT MAY BE MOUNTED IN ANY POSITION, HOWEVER THE MOUNTING POSITION MUST BE IDENTIFIED WHEN ORDERING.
 3. NOT DESIGNED FOR CONTINUOUS OPERATION OF MOTOR. CONTACT THE KERRY CO., INC. FOR SPECIAL ROD ENDS AND MOUNTING CONFIGURATIONS WHEN REQUIRED.
 4. DIMENSIONS ARE NOT CERTIFIED FOR CONSTRUCTION.
 5. SEE ACCESSORIES PAGE FOR MOUNTING BRACKETS, ETC.

* STANDARD LOCATION, OTHER LOCATIONS WILL BE USED ON UNITS THAT ARE NOT HORIZONTALLY MOUNTED.

THE KERRY CO., INC. JB-SERIES ELECTRO-HYDRAULIC LINEAR ACTUATOR